

PROJECT: **Lovington Fire Station # 2**
WDG PROJECT NO: **445-01**
DATE: **July 27, 2018**

ADDENDUM NO. 9

NOTICE TO PROPOSERS: This Addendum forms a part of the Contract Documents and modifies the original Specifications and Drawings for Lovington Fire Station # 2, dated June 30, 2017 (drawings) and July 5th, 2018 (specifications.)

Acknowledge receipt of this Addendum in the space provided in the Proposal Form. Failure to do so may disqualify the Bidder.



David W. Clarke

July 27, 2018
Date



CLARIFICATION:

A) None

SPECIFICATIONS:

A) **28 1000 – Access Control Surveillance Dispatch** add to specification section the attached equipment layout floor plan by US DIGITAL DESIGN.

DRAWINGS:

A) None

Substitution Request:

1. None

Attachment:

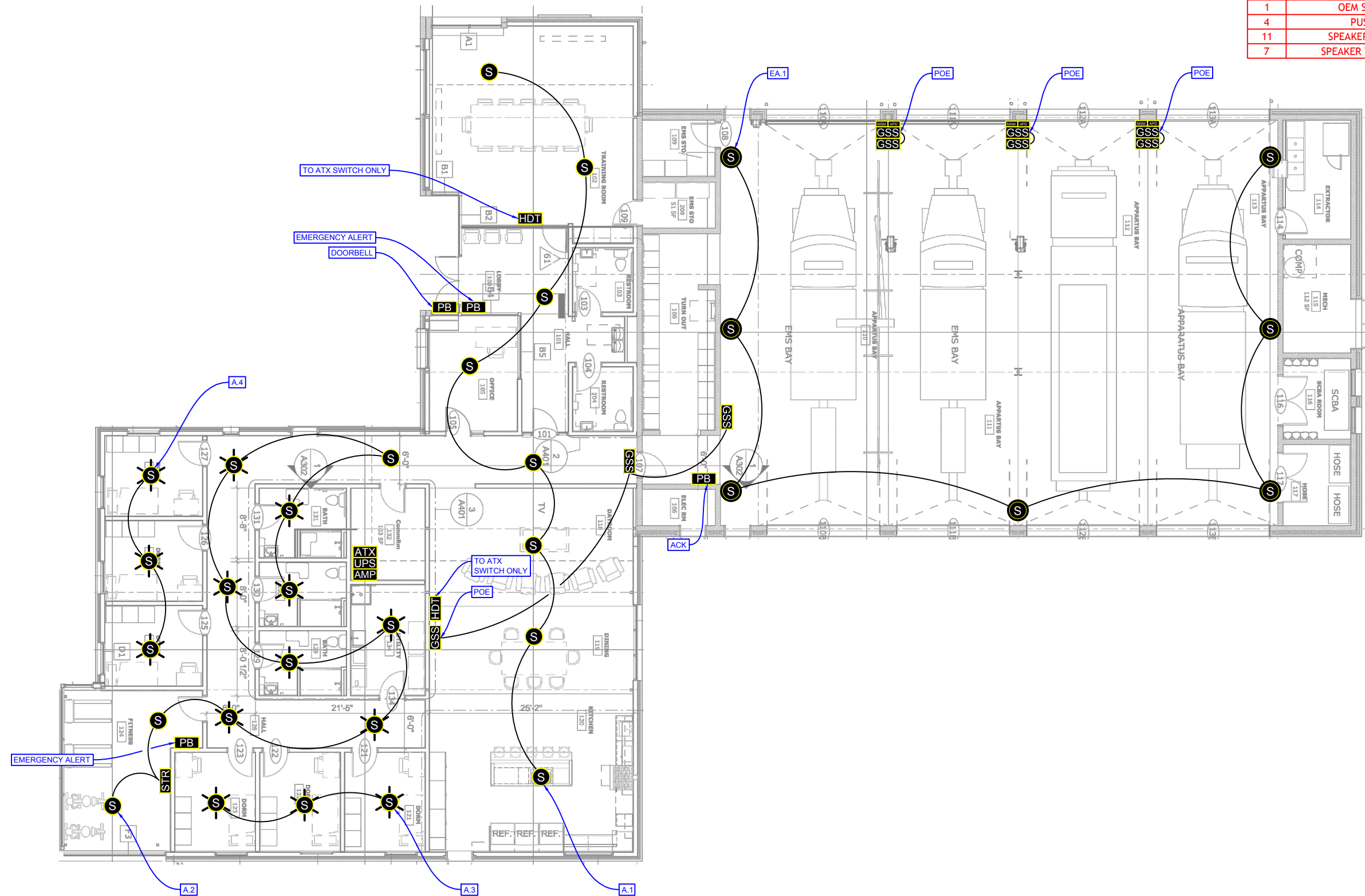
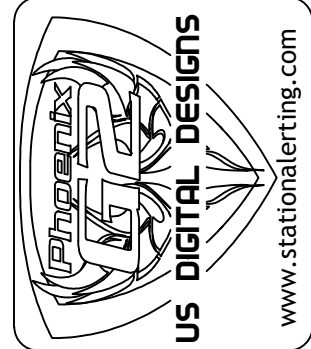
1. **US DIGITAL DESIGN equipment layout 2017-2-15**
2. **None**

END OF ADDENDUM NO. 9

- NOTES:
1. SEE ARCHITECTURAL SPECIFICATIONS FOR ALL ROUGH-IN AND INSTALLATION DETAILS.
 2. US DIGITAL DESIGNS DOES NOT SUPPLY BACK BOXES, CONDUITS, OR MOUNTING FASTENERS.
 3. US DIGITAL DESIGNS FIRE STATION ALERTING PLANS ARE DIAGRAMMATIC AND FOR QUOTING PURPOSES ONLY. DRAWING MAY NOT BE TO SCALE.

US DIGITAL DESIGNS	
Count	Name
1	EXTERNAL AMPLIFIER (60-100W)
1	G2 ATX STATION CONTROLLER
2	G2 HDTV REMOTE
14	G2 LED SPEAKER (G2-LVL-HC-70)
9	G2 MESSAGE SIGN STANDARD (MS-G2-S)
3	G2 MS ADAPTOR PLATE DOUBLE (AP-D)
1	G2 UPS (G2-UPS)
3	MS MOUNT (MS-MNT-ART-S)
1	OEM STROBE LIGHT
4	PUSH BUTTON
11	SPEAKER FLUSH MOUNT
7	SPEAKER WEATHER-PROOF

SYMBOL	DESCRIPTION
[ATX]	G2 ATX STATION CONTROLLER
[G2]	PHOENIX G2 STATION CONTROLLER
[EXP]	G2 EXPANSION MODULE
[I/O]	G2 I/O REMOTE
[MR]	G2 MESSAGE REMOTE
[MS]	G2 MESSAGE SIGN
[RR]	G2 ROOM REMOTE
[RR2]	G2 ROOM REMOTE 2
[HDT]	G2 HDTV REMOTE
[CIR]	G2 COLOR INDICATOR REMOTE
[SR]	G2 SIGN REMOTE
[UPS]	G2-UNINTERRUPTIBLE POWER SUPPLY
[I/O]	G2 I/O REMOTE
[PB]	OEM PUSH BUTTON
[STR]	OEM STROBE LIGHT
[AMP]	OEM AMPLIFIER
[T]	OEM TRANSFORMER
[S]	G2 LED SPEAKER, FLUSH MOUNT
[S]	G2 LED SPEAKER, METAL BOX
[S]	SPEAKER, WEATHER-PROOF
[S]	SPEAKER, FLUSH MOUNT
[S]	SPEAKER, METAL BOX
[FPD]	G2 FLAT PANEL MONITOR, XX", WITH MOUNT
[ADS]	APPARATUS DETECTION SENSOR
[GSS]	G2 MESSAGE SIGN
[VC]	VOLUME CONTROL (CUSTOMER SUPPLIED)
[OH]	OFF-HOOK
[FPD]	OEM FLAT PANEL DISPLAY
[IPC]	IP CAMERA
[ANS]	AMBIENT NOISE SENSOR
[TS]	TOUCH SCREEN
[SC]	DIGITAL SCANNER
[PR]	PRINTER
[PI]	PRINTER INTERFACE
[SP]	SURGE PROTECTOR



POE = USDD device connects to G2 ATX Power-Over-Ethernet (POE) port 1 thru 8 or G2 Expansion Module(s) ports 1 thru 12
 A.n = G2 ATX Amplifier 1...4
 EA.n = G2 External Amplifier 1...n

project **LOVINGTON FIRE DEPARTMENT, NM**

building **FIRE STATION 2**

filename **USDD_NM_LOVI.FS01.FSA.DWG**

date **15-Feb-2017**

design by **JA**