

PROJECT ENGINEER: David Roybal, PE
 PROJECT DESIGNER: Caitlin Jackson, EI
 DRAWN BY: Caitlin Jackson, EI

LEGEND

	ASPHALT
	CONCRETE
	THICKENED CONCRETE
	LANDSCAPING
	DECORATIVE CONCRETE
	WALKWAY
	NEW SIDEWALK
	FINISH GRADE 0.2' CONTOUR
	FINISH GRADE 1.0' CONTOUR
	EXIST. GRADE 0.5' CONTOUR
	EXIST. GRADE 1.0' CONTOUR
	TOP BACK OF CURB
	FINISHED GRADE
	EDGE OF ASPHALT
	TOP OF CONCRETE
	TOP OF SIDEWALK/WALKWAY
	TOP OF ASPHALT
	FLOW LINE
	CENTER LINE

REVISIONS

No.	DATE	DESCRIPTION

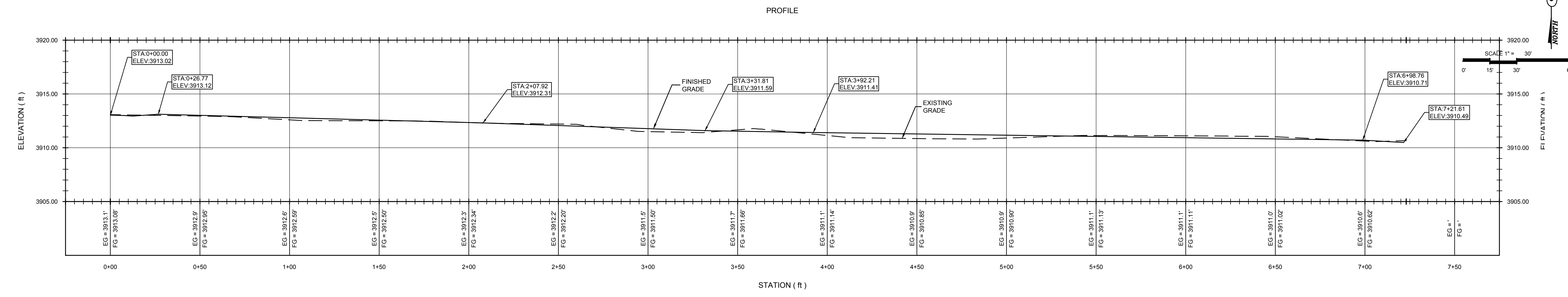
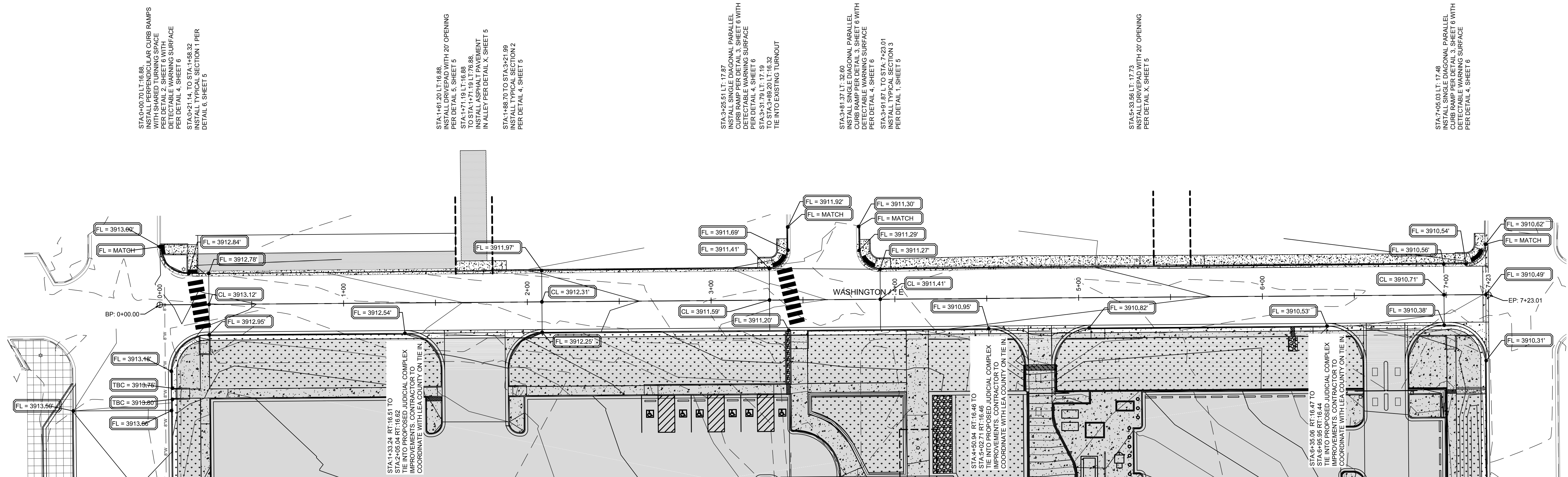
WASHINGTON AVE

LOVE STREET AND
 WASHINGTON AVE
 STREET IMPROVEMENTS

CITY OF LOVINGTON

PROJECT NUMBER:
2017.1095

SHEET:
4 OF 6

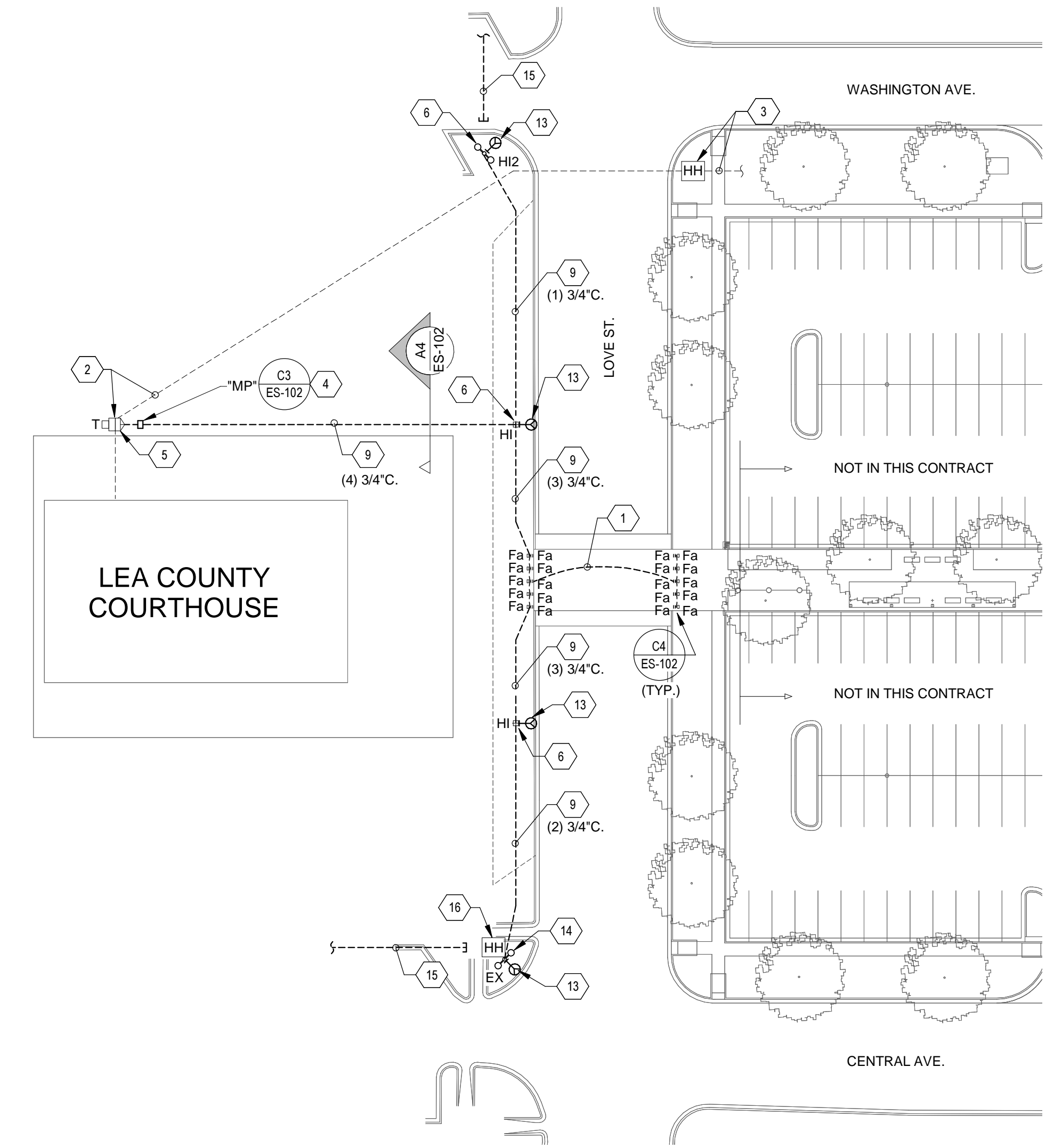


**WASHINGTON AVE CENTERLINE
 PROFILE VIEW**

HORIZONTAL SCALE: 1" = 60'
 VERTICAL SCALE: 1" = 5'

- GENERAL NOTES:**
1. SHADED AREAS ARE PART OF THE JUDICIAL COMPLEX PROJECT AND NOT INCLUDED IN THIS CONTRACT.
 2. ADA RAMPS ARE TO BE DONE AS PART OF THE JUDICIAL COMPLEX PROJECT.
 3. CONTRACTOR SHALL COORDINATE WORK WITH LEA COUNTY AND THE CITY OF LOVINGTON TO AVOID IMPEDED ONGOING WORK FOR THE JUDICIAL COMPLEX.

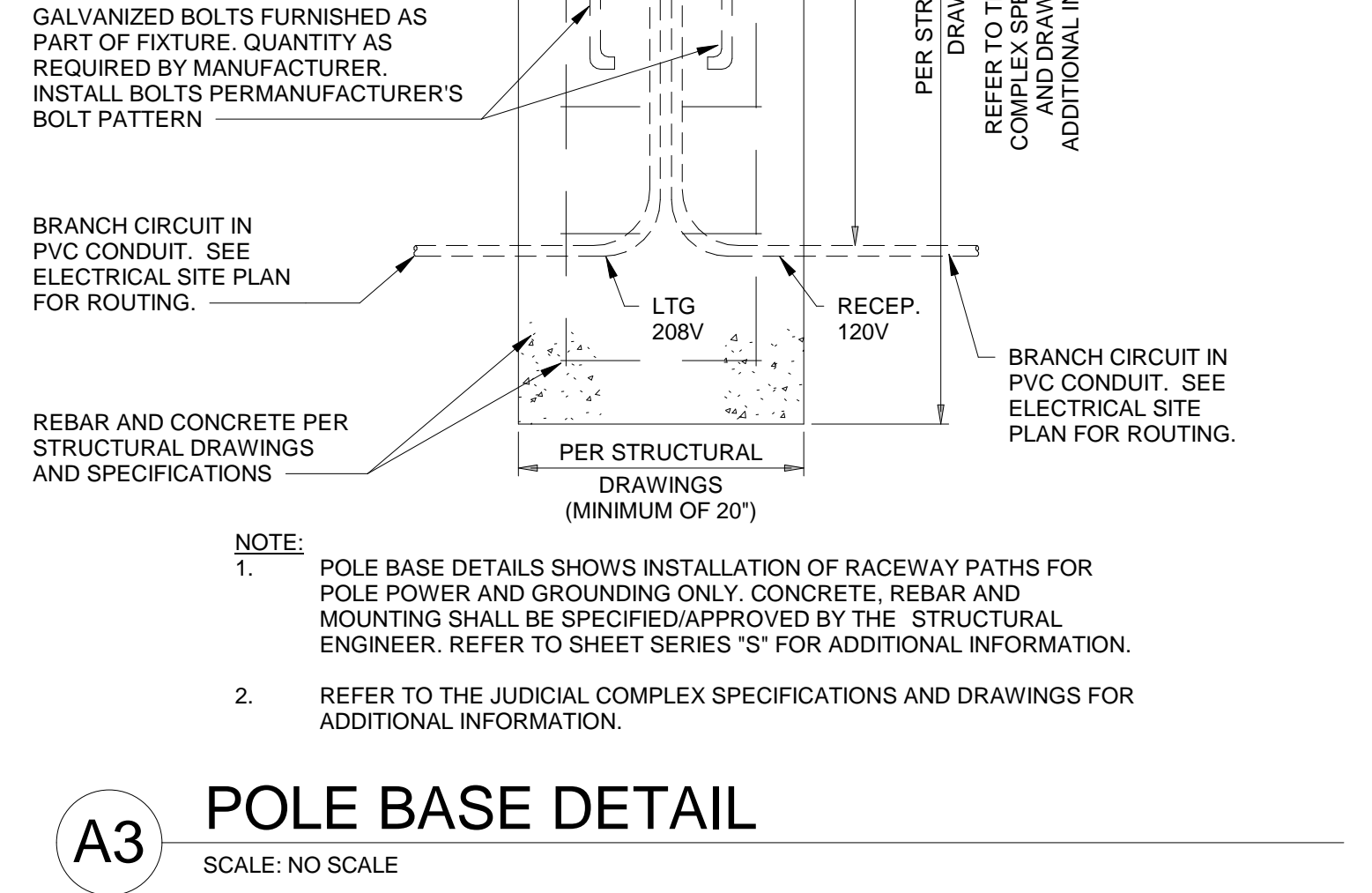
ELECTRICAL LUMINAIRE SCHEDULE SITE									
LUMINAIRE SCHEDULE NOTES:									
1. MANUFACTURERS CATALOG NUMBERS REPRESENT MANUFACTURER SERIES. SHOP DRAWING SUBMITTALS WILL INCLUDE ALL PART NUMBERS REPRESENTING ALL ITEMS OF THIS LUMINAIRE SCHEDULE. IT IS THE RESPONSIBILITY OF THE CONTRACTOR TO ORDER LUMINAIRES TO INCLUDE ALL PARTS INDICATED ON SCHEDULE FOR EACH LUMINAIRE. SUBMITTAL WILL CALL OUT EACH PART CLEARLY.									
2. LUMINAIRE MAY REQUIRE MOUNTING COORDINATION WITH ARCHITECT/CIVIL PRIOR TO COMMENCEMENT OF ANY WORK. MEET ALL ARCHITECTURAL REQUIREMENTS AND ADJUST FOR CONSTRUCTION CONDITIONS.									
TYPE	DESCRIPTION	VOLTS	MOUNTING	LAMPS	BALLAST TYPE	EMERGENCY BATTERY PACK	LENS	MANUFACTURER/MODEL	NOTES
E	EXTERIOR RECESSED DIE-CAST STEP LIGHT WITH STAINLESS STEEL FACE PLATE. 6" H x 3.5" W x 5.5" D. IP65, MARINE GRADE. CORROSION RESISTANT, HEAVY WALLED, ALUMINUM CONSTRUCTION. WHITE FINISH STANDARD. FACTORY MOUNTING PLATE SUPPLIED. FACTORY MOUNTING PLATE SHALL FIT IN BOLLARD.	208 MULTI TAP (UNV.)	RECESSED ON BOLLARD AS NOTED ON PLANS	LED 4000K 200 LUMENS	LED DRIVER	NONE	OPAL, TEMPERED LENS	FC LIGHTING #FCSLS52	1.2
HI	LED TRADITIONAL ACORN STYLE FIXTURE. THE ACORN SHALL BE PROVIDED WITH A HEAVY CAST DECORATIVE RING WHICH INCLUDES FOUR (4) CAST MEDALLIONS FINISHED IN ACCENT GOLD. SINGLE POLE RATED IP65. STANDARD FINISH SHALL BE PINK GREEN TEXTURE. PROVIDE WITH SF FITTER, STRAIGHT SMOOTH SHAFT AND CIRCULAR BASE AS SHOWN IN POLE BASE DETAIL. LUMINAIRE OPTIONS: PROVIDE WITH NEMA 5-30 IN-USE WEATHER PROOF COVER AND RECEPTACLE.	208 MULTI TAP (UNV.)	12" POLE (MATCH EXISTING POLE HEIGHTS)	LED 4500K 5400 LUMEN	LED DRIVER	NONE	POLYCARBONATE CLEAR TEXTURED ACORN	STERNBERG LIGHTING #4850SRLED OLD TOWN SERIES	1.2
HI2	LED TRADITIONAL ACORN STYLE FIXTURE. THE ACORN SHALL BE PROVIDED WITH A HEAVY CAST DECORATIVE RING WHICH INCLUDES FOUR (4) CAST MEDALLIONS FINISHED IN ACCENT GOLD. SINGLE POLE RATED IP65. STANDARD FINISH SHALL BE PINK GREEN TEXTURE. PROVIDE WITH SF FITTER, STRAIGHT SMOOTH SHAFT AND CIRCULAR BASE AS SHOWN IN POLE BASE DETAIL. LUMINAIRE OPTIONS: PROVIDE WITH NEMA 5-30 IN-USE WEATHER PROOF COVER AND RECEPTACLE. DOUBLE HEAD AND DOUBLE ARM (L-SHAPE)	208 MULTI TAP (UNV.)	12" POLE (MATCH EXISTING POLE HEIGHTS)	LED 4500K 5400 LUMEN (EACH HEAD)	LED DRIVER	NONE	POLYCARBONATE CLEAR TEXTURED ACORN	STERNBERG LIGHTING #4850SRLED OLD TOWN SERIES	1.2



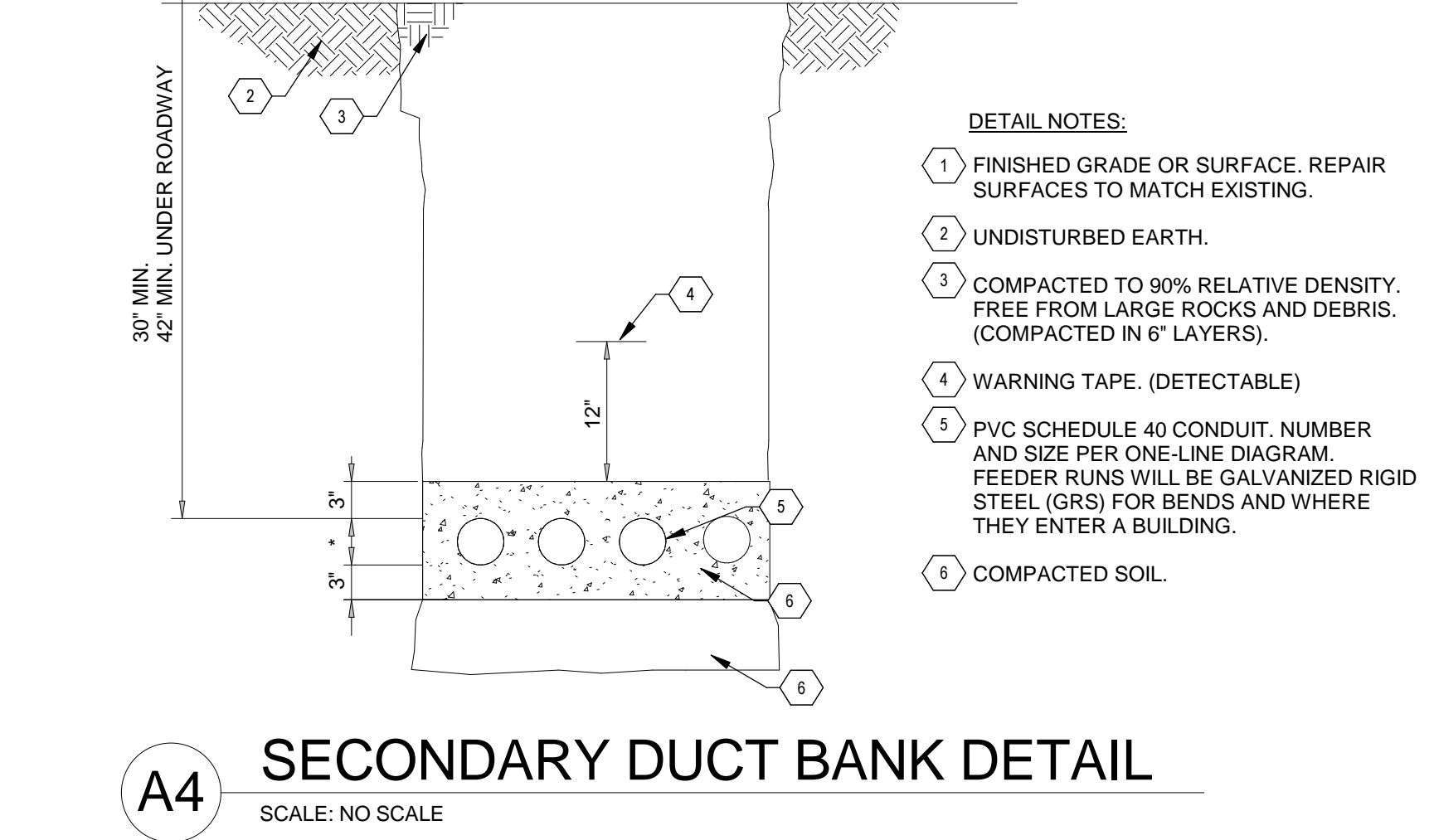
A1 ELECTRICAL SITE PLAN
SCALE: 1" = 40'-0"

PANEL: MP											
VOLTAGE: 208/120V		PH: 3	WIRE: 4	BUS RATING: 100A	MAIN: 100A MCB	PANELBOARD SPECIAL FEATURES					
AIC: 22,000		MOUNTING: PEDESTAL	SKIRT: NONE	<input type="checkbox"/> 200% RATED NEUTRAL <input type="checkbox"/> SURGE PROTECTION DEVICE (SPD) <input type="checkbox"/> ISOLATED GROUND BAR							
LOAD TYPE	LOAD DESCRIPTION	BKR (A)	LOAD (VA)	CKT NO	PHASE A	PHASE B	CKT NO	LOAD (VA)	BKR (A)	LOAD DESCRIPTION	LOAD TYPE
C	LIGHTING LOADS	20	4000	1	4000		2	20	20	SPARE	
C		--	4000	3		4000	4	--	4	SPARE	
R	RECEPTACLE	30	2600	5			6	--	6	SPACE	
R	RECEPTACLE	30	2600	7	2600		8	--	8	SPACE	
R	RECEPTACLE	30	2600	9		2600	10	--	10	SPACE	
R	RECEPTACLE	30	2600	11		2600	12	--	12	SPACE	
TOTAL (VA)		6600		6600		5200					
TOTAL CONNECTED:		(KVA)	(AMP)								
		18.4	51.1								
PANELBOARD NOTES											
A. REFER TO SINGLE LINE DIAGRAM FOR ADDITIONAL INFORMATION											

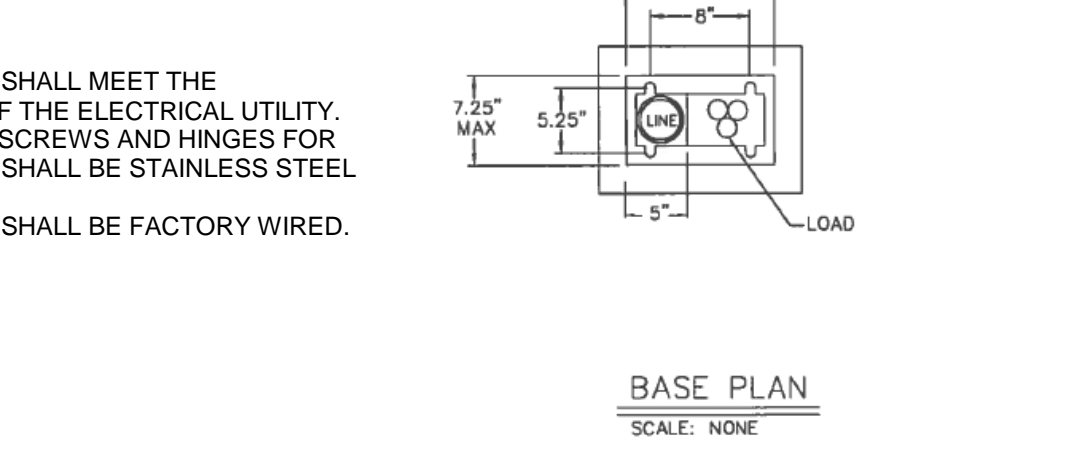
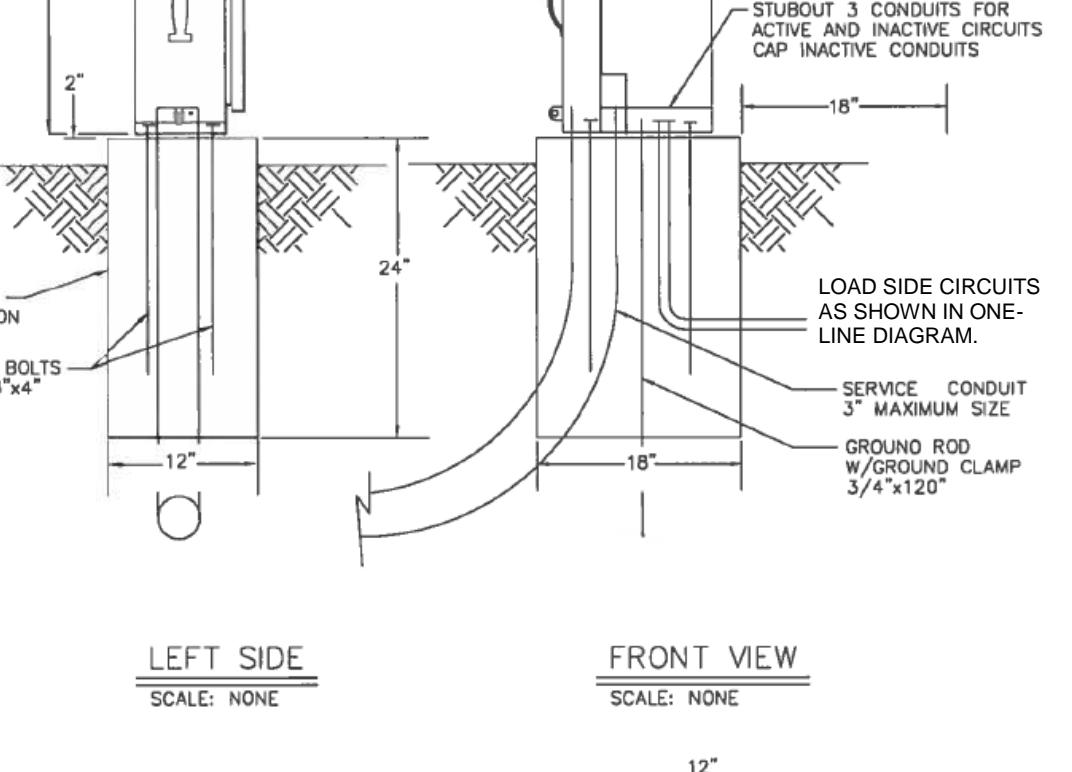
A3 POLE BASE DETAIL
SCALE: NO SCALE



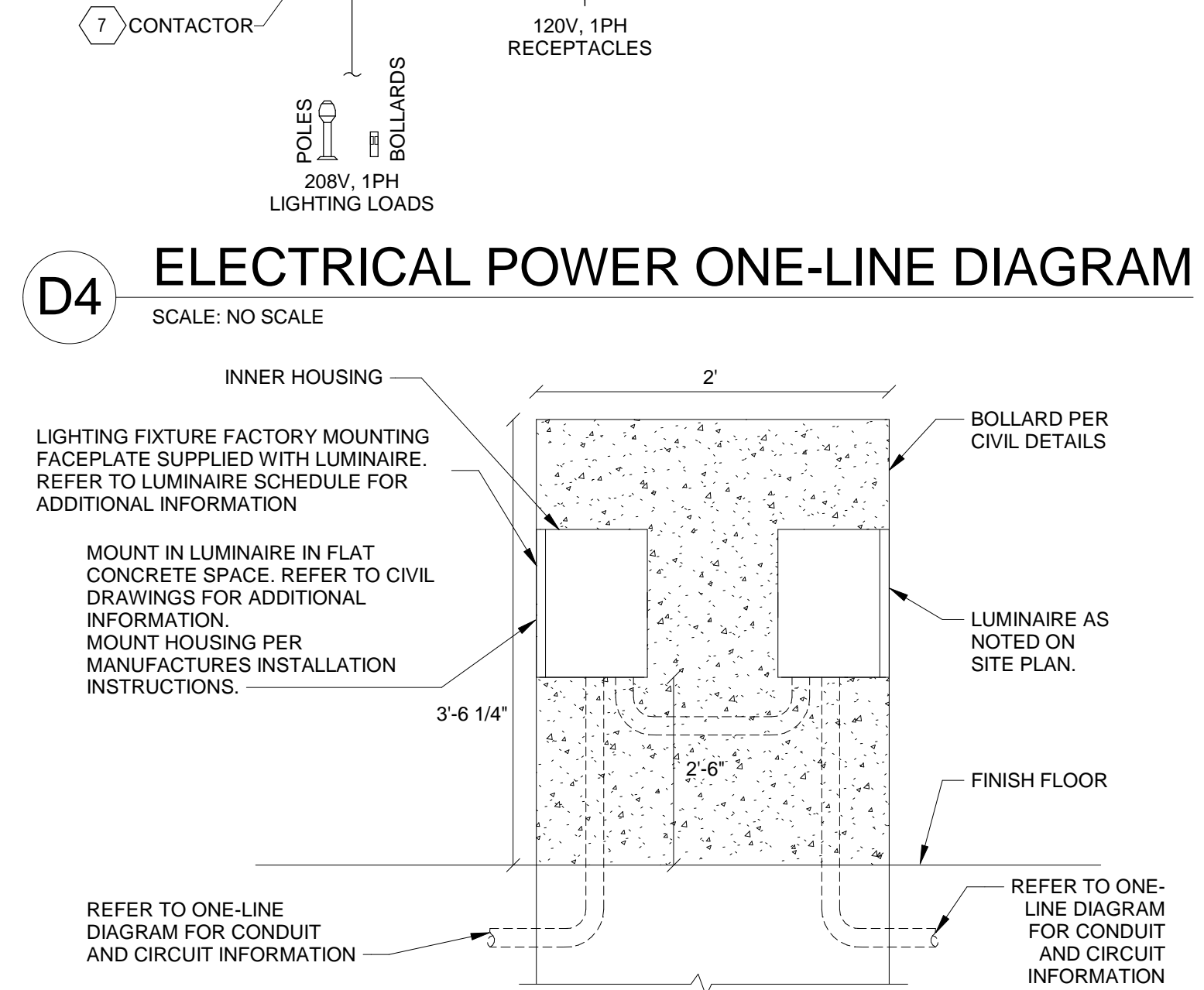
A4 SECONDARY DUCT BANK DETAIL
SCALE: NO SCALE



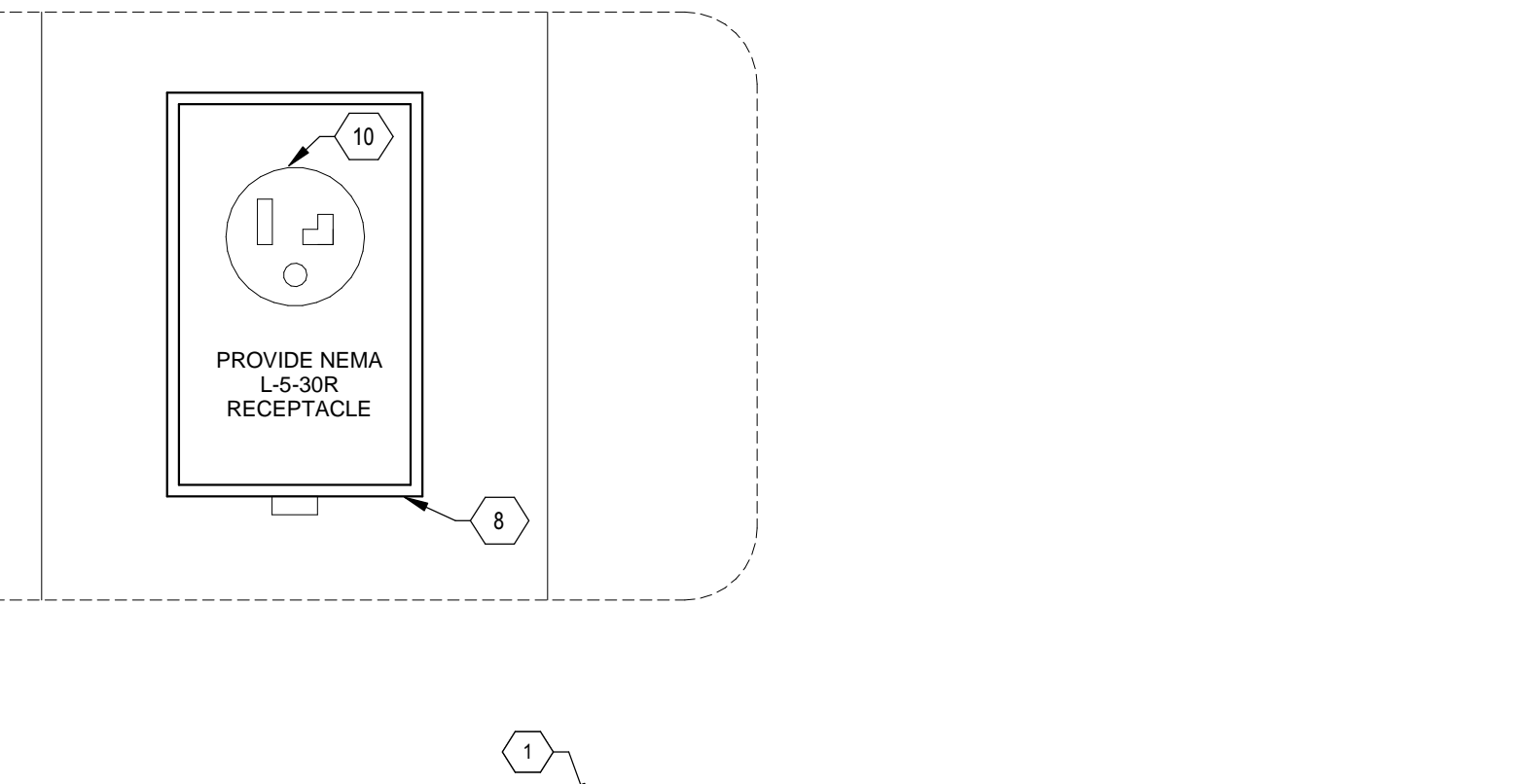
A4 SECONDARY DUCT BANK DETAIL
SCALE: NO SCALE



C3 METER PEDESTAL DETAIL
SCALE: NO SCALE

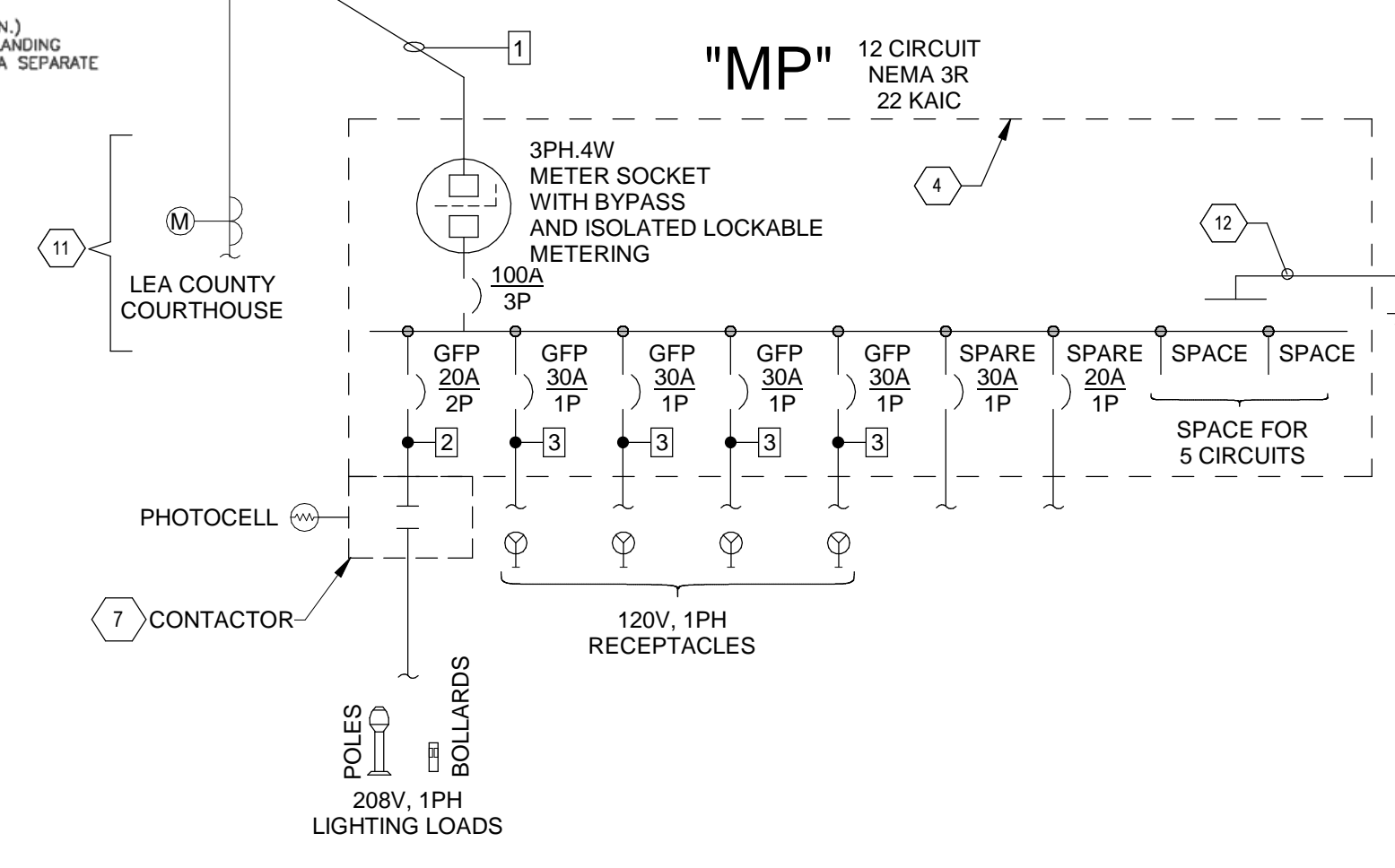


D4 ELECTRICAL POWER ONE-LINE DIAGRAM
SCALE: NO SCALE



C4 STEP-LIGHT BOLLARD DETAIL
SCALE: NO SCALE

FEEDER SCHEDULE			
NOTE: ALL CONDUCTORS ARE COPPER, TYPE THWN/THHN UNLESS OTHERWISE NOTED.			
DESIGNATION	CONDUCTORS	GROUND	CONDUIT
1	4#1	--	1 1/2"
2	2#10	10	3/4"
3	2#6	10	3/4"



D4 ELECTRICAL POWER ONE-LINE DIAGRAM
SCALE: NO SCALE

PETTIGREW & ASSOCIATES PA
ENGINEERING | SURVEYING | TESTING
DEFINING QUALITY SINCE 1965
100 E. Navajo Drive Suite 100 Hobbs NM 88240
T 575 393 9827 F 575 393 1543 Pettigrew.us

BRIDGERS & PAXTON
4600 C Montgomery Blvd. NE
Albuquerque, NM 87109 505.883.4111 www.bpce.com
B & P PROJECT #7472

GENERAL SHEET NOTES

- ALL UNDERGROUND CONDUIT LOCATED UNDER ROADWAYS AND PARKING LOTS SHALL BE CONCRETE ENCASED PATHWAYS TRAFFIC RATED.
- METER PEDESTAL SHALL MEET THE REQUIREMENTS OF THE ELECTRICAL UTILITY.
- STRUCTURAL AND ELECTRICAL SPECIFICATIONS INCLUDED ON THE JUDICIAL COMPLEX APPLY TO THIS WORK AND WILL BE AVAILABLE UPON REQUEST.
- ALL CONDUCTORS SHOWN IN FEEDER SCHEDULE SHALL BE STRANDED COPPER THHN-2 WIRE.

KEYNOTES

- COORDINATE ROUTING WITH OTHER EXISTING UTILITIES.
- INSTALLATION OF TRANSFORMER AND POWER TO TRANSFORMER IS IN PROGRESS AND NOT INCLUDED IN THIS CONTRACT. COORDINATE LOCATION OF TRANSFORMER IN FIELD.
- LCEC POWER FEED FROM SECTIONALIZER. THIS WORK IS NOT PART OF THIS CONTRACT.
- PAD MOUNTED COMBINATION METER PEDESTAL WITH INTERNAL POWER PANEL TO BE LOCATED ADJACENT TO TRANSFORMER. COORDINATE FINAL LOCATION ON SITE. CONSTRUCTION SHALL BE NEMA 3R RAINPROOF AND UL LISTED. METER SOCKET TYPE SHALL MEET THE REQUIREMENTS OF THE ELECTRICAL UTILITY (LCEC). PROVIDE WITH INTERNAL DISCONNECT. PROVIDE CONCRETE PAD FOR METER PEDESTAL.
- TAP THE SECONDARY OF THE 208Y/120V TRANSFORMER AND EXTEND CONDUCTORS TO METER PEDESTAL. COORDINATE WITH ELECTRICAL UTILITY (LCEC) FOR TERMINATIONS AT TRANSFORMER. REFER TO DETAIL D4 ON THIS SHEET FOR ADDITIONAL INFORMATION.
- DEMOLISH OLD LIGHT POLE LUMINAIRE AND BASE AND DISCONNECT FROM OLD CIRCUIT. LOCATE NEW LUMINAIRE IN SAME LOCATION. LIGHT POLE HEIGHT, COLOR TEMPERATURE AND STYLE TO MATCH EXISTING ANTIQUE STYLE WITH BASE POLE LOCATED ON THE CORNER OF CENTRAL AVE. AND LOVE ST. PROVIDE CONCRETE BASE PER DETAIL A3.
- 2 POLE, 208V, 30 A RATED, NEMA 3R ENCLOSURE ELECTRICALLY HELD CONTACTOR. MOUNT ON METER PEDESTAL. ONE PHOTOCELL CONTROLS ALL LUMINAIRE IN CIRCUIT.
- WEATHER PROOF, LOCKABLE IN-USE COVER SHALL BE MOUNTED 18" A.F.F. COORDINATE RECEPTACLE AND LIGHT CONDUITS WITH LUMINAIRE INSTALLER.
- REFER TO DETAIL D4 ON THIS SHEET FOR NUMBER OF CIRCUITS AND CONDUIT / CONDUIT SIZES. COORDINATE TRENCHING AND NEW RACEWAY WITH EXISTING UTILITIES IN UTILITY RIGHT OF WAY.
- THE CITY OF LOVINGTON REPRESENTATIVE SHALL APPROVE FINAL NEMA CONFIGURATION OF RECEPTACLE. COORDINATE RECEPTACLE INSTALLATION IN COVER BOX IN FIELD. CONFIRM LOCKING VS STRAIGHT BLADE WITH CITY.
- TRANSFORMER FOR THE COURTHOUSE WILL BE INSTALLED IN CONJUNCTION WITH THIS WORK. COORDINATE WITH LCEC FOR TRANSFORMER TERMINATIONS, CTS, METER AND FEEDERS FOR COURTHOUSE ARE NOT PART OF THIS CONTRACT AND ARE FOR REFERENCE ONLY.
- PROVIDE #6 GROUND CONDUCTORS AND GROUND ROD ADJACENT TO THE EQUIPMENT.
- PROVIDE RECEPTACLE ON LIGHT POLE AND CONDUCTOR REDUCER TO TERMINATE ON DEVICE, AS NEEDED. FOLLOW NEC PIGTAILING REQUIREMENTS AT ALL TIMES.
- EXISTING POLE LUMINAIRE TO REMAIN. DISCONNECT EXISTING POLE CIRCUIT. PROVIDE NEW RECEPTACLE ON EXISTING POLE. PURCHASE RECEPTACLE KIT FROM LUMINAIRE MANUFACTURER TO MATCH NEW RECEPTACLES ON THE NEW POLES; INSTALL PER MANUFACTURERS RECOMMENDATIONS.
- DISCONNECT EXISTING CIRCUIT AND ABANDON IN PLACE. DE-ENERGIZE CONDUCTORS; INVESTIGATE AND IDENTIFY BRANCH CIRCUIT POWER CONNECTION TO NEXT UP-STREAM DEVICE AND CUT AND SAFE-OFF CONDUCTORS AT BOTH END OF CIRCUIT. LABEL AND IDENTIFY CONDUCTORS AT BOTH ENDS.
- PROVIDE 8" X 8" X 12" HANDHOLE IN DIRT ADJACENT TO EXISTING POLE. ROUTE BOTH NEW BRANCH CIRCUITS (LIGHTING AND RECEPTACLE) THROUGH HANDHOLE. INTERCEPT EXISTING RACEWAY FEEDING EXISTING POLE AND EXTEND TO HANDHOLE TO MAKE NEW CONNECTIONS.

NO.	ISSUE	DATE

PROJECT: LOVE STREET AND WASHINGTON AVE STREET IMPROVEMENTS

SCALE: As indicated

PROJECT NO: 2017.1095

PROJECT MANAGER: MEG

DRAWN BY: OU

SHEET TITLE: ELECTRICAL SITE PLAN, SINGLE LINE DIAGRAM AND DETAILS

DESIGN PHASE: CONSTRUCTION DOCUMENTS

SHEET NUMBER: 1 OF 1

STATE OF NEW MEXICO
MICHAEL GRIESEL
20486
REGISTERED PROFESSIONAL ENGINEER